





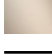

36 050 970



- ohne Rosette
Eigensicher gegen Rückfließen.

Eigensicher gegen Rückfließen.

Passt zu: IMO, LULU, MADISON, MEM, TARA, CL.1, LISSÉ, VAIA, META, CYO

| | | |
|-------------------------------------------------------------------------------------|---------------------------------|---------------|
|  | Platin gebürstet | 36 050 970-06 |
|  | Chrom | 36 050 970-00 |
|  | Platin | 36 050 970-08 |
|  | Dark Brass matt | 36 050 970-16 |
|  | Dark Chrome | 36 050 970-19 |
|  | Light Gold | 36 050 970-26 |
|  | Light Gold gebürstet | 36 050 970-27 |
|  | Messing gebürstet (23kt Gold) | 36 050 970-28 |
|  | Schwarz matt | 36 050 970-33 |
|  | Bronze gebürstet | 36 050 970-42 |
|  | Champagne gebürstet (22kt Gold) | 36 050 970-46 |
|  | Champagne (22kt Gold) | 36 050 970-47 |
|  | Chrom gebürstet | 36 050 970-93 |
|  | Dark Platin gebürstet | 36 050 970-99 |

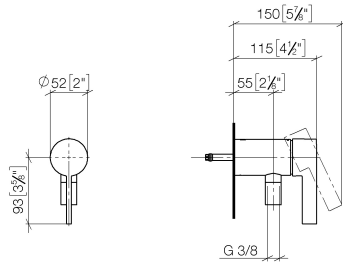
Benötigtes Zubehör

- UP-Wandbefestigung -** 35 050 970 90
- Max. Einbautiefe 105 mm
 - Min. Einbautiefe 80 mm



36 050 970

mm [inches]



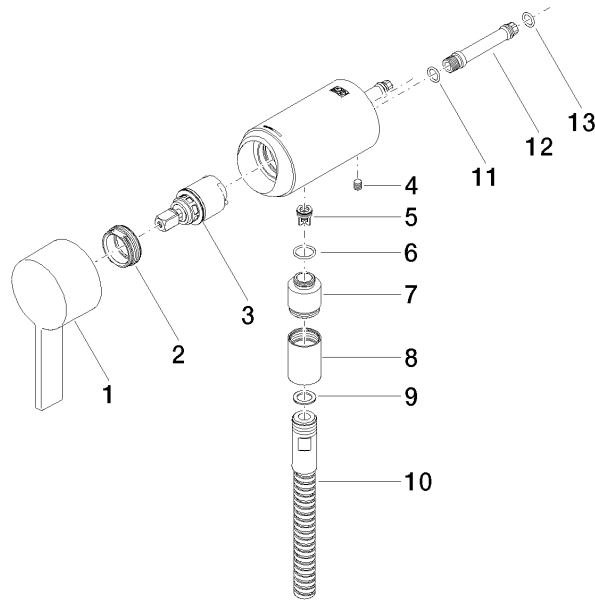
Durchflussdiagramm



Zertifikate

Belgaqua_21-025- WRAS_2011027. LGA_29928.
27_1.

36 050 970



Ersatzteilstückliste

| Nr. | Artikelnummer | Benennung | Verbaumenge | Lieferzeit |
|-----|--------------------|----------------------------------------------------------------|-------------|------------|
| 1 | 90 20 97 064 00-06 | Griff | 1 | 10 |
| 2 | 09 24 04 266 90 | Mutter | 1 | 2 |
| 3 | 90 15 05 044 04 90 | Kartusche | 1 | 10 |
| 4 | 09 31 11 004 90 | Stift | 1 | 60 |
| 5 | 09 23 01 131 90 | Rueckflussverhinderer | 1 | 2 |
| 6 | 09 14 10 213 90 | Dichtung | 1 | 2 |
| 7 | 09 24 03 281-06 | Nippel | 1 | 10 |
| 8 | 90 21 02 069 00-06 | Haube | 1 | 10 |
| 9 | 90 14 20 026 00 90 | Dichtung | 1 | 2 |
| 10 | 28 322 970-06 | Metall-Brauseschlauch 1/2" x 3/8" x 1750 mm - Platin gebürstet | 1 | 2 |
| 11 | 90 14 10 060 00 90 | Dichtung | 1 | 2 |
| 12 | 09 18 40 230 90 | Anschluss | 1 | 2 |
| 13 | 09 14 10 061 90 | Dichtung | 1 | 2 |